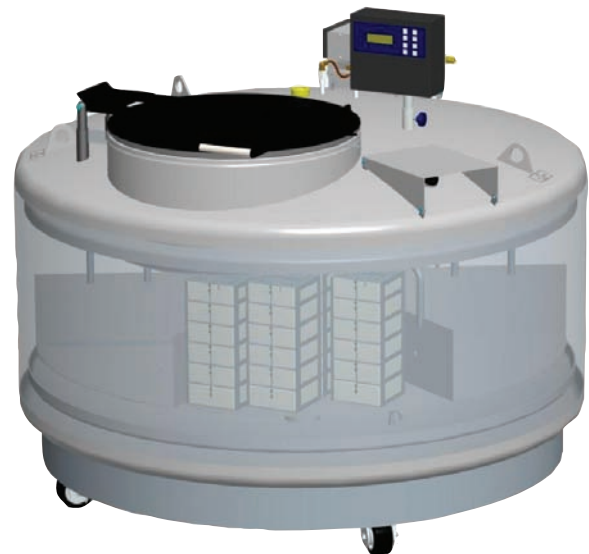




The MVE Stock Series provides the ultimate in security for the breeding industry and are primarily used to store semen and embryos. The freezers are designed for pull and pack shipment, with a wide neck opening for easy access. Although engineered for full liquid storage, the MVE Stock Series can be operated in vapor using the available vapor storage accessory packs.

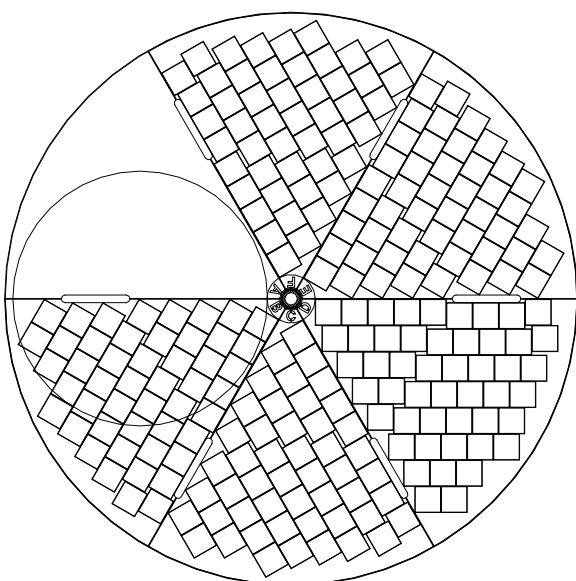
**Features include:**

- Wide neck opening
- Lowest liftover height
- Largest LN2 capacity

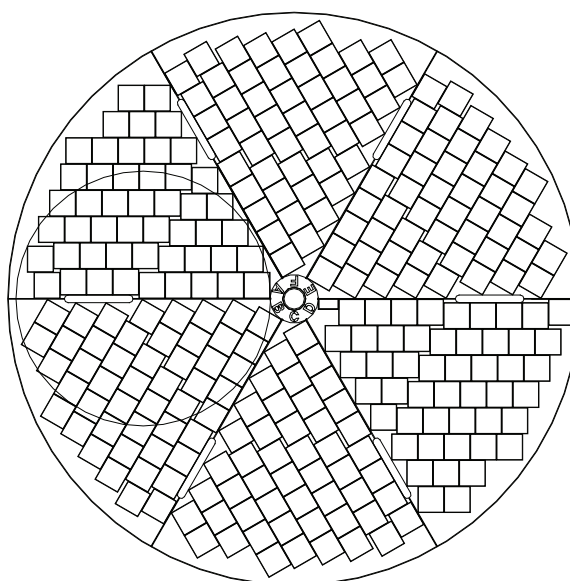


# Rack Layouts

## 1877P-2T-150



TOP TIER CAPACITY  
245 BOXES



BOTTOM TIER CAPACITY  
294 BOXES

	MVE 103	MVE 808	MVE 816P-2T-190	MVE 1318	MVE 1842P-150	MVE 1877P-2T-150
--	------------	------------	--------------------	-------------	------------------	---------------------

### Maximum Storage Capacity

#### 1.2 & 2 ml Vials

(Internally Threaded)

	-	11700	10500	20800	-	-
<b>Number of Racks 100 cell boxes</b>	-	12	105	24	-	-
<b>Number of Racks 25 cell boxes</b>	-	4	-	8	-	-
<b>Total Number of Racks</b>	-	16	21	32	-	-
<b>Number of SUC-1 canisters (2.5"x2.5"x11)</b>	22	61	115	129	294	539
<b>Number of 1.2 ml vials on canes</b>	3168	8784	16560	18576	42336	77616
<b>Number of 2.0 ml vials on canes</b>	1760	4880	9200	10320	23520	43120
<b>Number of 1/2 cc straws 10/cane</b>	6820	18910	35650	39990	91140	167090

### Performance

<b>LN2 Capacity L</b>	39	230	381	482	915	1400
-----------------------	----	-----	-----	-----	-----	------

### Unit Dimensions

<b>Neck Opening in. (mm)</b>	16.0 (406)	25.0 (634)	12.5 (317)	35.5 (901)	25.0 (635)	25.0 (635)
<b>Usable Internal Height in. (mm)</b>	12.0 (305)	22.0 (558)	13.0 (330) per level	18.8 (479)	13.0 (332)	13.0 (330) per tray
<b>Inner Diameter in. (mm)</b>	16.00 (406)	28.30 (720)	28.70 (728) top tray 27.70 (702) bottom	39.60 (1007)	56.25 (1429)	56.25 (1429)
<b>Overall Height in. (mm)</b>	16.4 (415)	42.8 (1088)	50.0 (1271)	47.0 (1193)	44.3 (1127)	58.2 (1479)
<b>Door Width</b>						
<b>Requirement** in. (mm)</b>	18 (457)	31 (787)	32 (813)	42 (1067)	60 (1524)	60 (1524)
<b>Weight Empty lb. (kg)</b>	48 (22)	250 (114)	475 (215) est.	469 (213)	1167 (530)	1600 (726)
<b>Weight Liquid Full* lb. (kg)</b>	117 (53)	660 (300)	1155 (524) est.	1328 (602)	2798 (1270)	4094 (1857)

#### TWO Year Standard Warranty • FIVE Year Vacuum Warranty

Conforms to MDD 93/42/EEC, the Medical Device Directive for the EU.

\* Without inventory

\*\*Minimum width required for vessel to pass through opening. Footprint may vary. Contact Tech Service for detailed drawings.

For further information,  
contact Air Products  
T 0800 389 0202  
E apukinfo@airproducts.com

